

# VitaLab

FAST

SENSITIVE

RELIABLE



## Reference <<<

- [1] IL-6-Do You Really Know That?
- [2] Interleukin 6
- [3] Interleukin 6 Structure & Function
- [4] The Two-Faced Cytokine IL-6 in Host Defense and Diseases
- [5] The Role of Interleukin 6 During Viral Infections

## IL-6 Test Kit

(Dry Fluorescence Immunoassay)

CE IVD

**Interleukin-6 (IL-6)** is a cytokine that belongs to the class of interleukins. It is produced by fibroblasts, monocytes/macrophages, T lymphocytes, B lymphocytes, epithelial cells, keratinocytes, and various tumor cells.

IL-6 plays a critical role in regulating the acute phase response, hematopoiesis, inflammation, metabolic control, liver regeneration, bone metabolism and cancer progression.

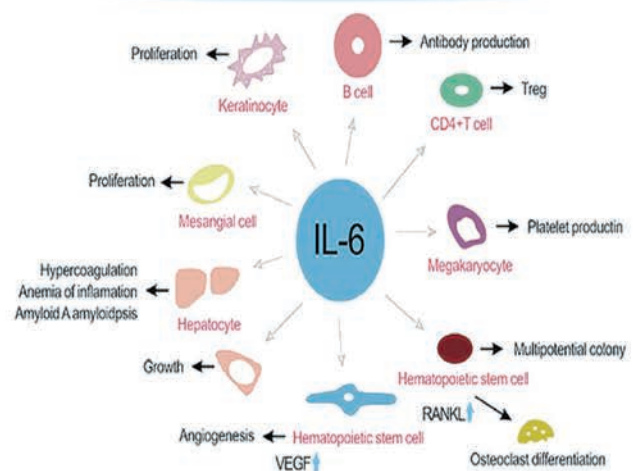
Higher outcomes may be multiple myeloma, psoriatic arthritis, psoriasis, and multiple myelomatosis nephropathy.

## IL-6 Signaling Pathway



IL-6 signals is initiated by binding to its receptor named IL-6R. IL-6R protein has two forms in cells, one is membrane-bound form, and another is soluble (sIL-6R) form. If cells do not express IL-6R, they can be stimulated by a complex formed by IL-6 and a sIL-6R. Releasing the IL-6R protein presenting cells, which presents a gp130-responsive response to IL-6 cytokines. In addition, IL-6 responsive cells are very sensitive to IL-6R.

## The function of IL-6 in autoimmune and chronic inflammatory diseases



## Steps of Operation



## Interpretation of Result

IL-6	Measuring Range	4.8 pg/mL-2000 pg/mL
	Cut-Off Value	10 pg/mL

